

**OPERATOR'S
SPARE PARTS &
SERVICE MANUAL**



®

**Plate Compactor
Model PP33**

FAIRPORT

CONSTRUCTION EQUIPMENT LTD

Blagden Street
Sheffield
S2 5QS
ENGLAND
Tel: +44 (0) 114 276 7921
Fax: +44 (0) 114 272 0965
Email: sales@fairport.uk.com
Website: www.fairport.uk.com

Unit 32,
The Bell Centre,
Newton Road,
Manor Royal,
Crawley,
West Sussex,
RH10 9FZ
Tell +44 (0) 1293 534742
Fax +44 (0) 1293 529056

CONTENTS

Page

1.	SAFETY	2
	SAFETY PICTOGRAMS USED ON FAIRPORT EQUIPMENT	2
2.	TECHNICAL DATA	3
3.	ROUTINE MAINTENANCE	3
3.	STARTING THE ENGINE	4
4.	OPERATOR INSTRUCTIONS	4
5.	VEE BELT ADJUSTMENT	5
6.	WARRANTY CONDITIONS AND CLAIMS PROCEDURE	5
	CONDITIONS	6
	CLAIMS PROCEDURE	6
7.	REPAIRS AND ESTIMATES	7
8.	PARTS LIST - M/C	8
9.	BLOCK COMPACTING MAT KIT	11
10.	WATER SPRINKLER KIT	11
11.	WATER SPRINKLER KIT GX100	12
	EC Declaration of Conformity	Error! Bookmark not defined.

1. SAFETY

- Do not operate this machine unless all guards are in position and secure.
- Do not smoke when refuelling.
- Do not refuel with engine running.
- Wipe up spilt fuel.
- Do not overfill.
- Dispose of fuel contaminated wipes safely
- Do not run engine in enclosed areas without adequate ventilation.
- Do not run engine in an area that has a hazardous or explosive atmosphere.
- Disconnect H.T. lead from spark plug on petrol engines before carrying out any maintenance.
- Turn off fuel when not using machine.
- Wear protective footwear, ear defenders and gloves.
- Comply with site safety regulations.
- Check condition of anti-vibration mounts between engine plate and base plate before lifting.

SAFETY PICTOGRAMS USED ON FAIRPORT EQUIPMENT



2. TECHNICAL DATA

Engine

Manufacturer:	Honda	Honda
Model:	G100	GX100
Net BHP at operating speed:	2.1	To Be Advised
Operating speed, Max RPM	3900	3900
Starting:	Recoil	Recoil

Dimensions

Height including handle, mm:	885, handle in operating position
Length including handle, mm:	775, handle in operating position
Height, handle folded, mm:	440
Length, handle folded, mm:	910
Width, mm:	330
Contact area, sq. m:	0.10
Weight, kg:	41

Performance

Vibration frequency, VPM:	6882
Centrifugal force, kg:	787

Noise Emissions

Noise Levels Honda GX 100

Guaranteed Sound power level:	108. dB Lwa
Sound pressure level at Operators Ear:	90 db Lpa

Test condition: To BS 500-4 2001

Hand/Arm Vibration (maximum axis)

Honda GX160	8.2m/Sec ²
-------------	-----------------------

Test condition: To BS 500-4 2001

3. ROUTINE MAINTENANCE

(See also the engine manufacturer's book issued with machine).

Daily: Check engine oil level twice daily.
Check tightness of all fastenings after first days use, thereafter check monthly.
Clean air filter daily if working in dusty conditions.
Clean base plate thoroughly if compacting black-top or lean concrete.

Weekly: Clean air filter (see "daily")

Monthly: Check tightness of fastenings.
Check condition of anti-vibration mounts.

The vibrator shaft bearings are pre-lubricated and 'sealed for life'.

3. STARTING THE ENGINE

Check oil level.

Turn fuel tap on.

Put speed control lever to tick-over.

If engine is cold, close the choke (petrol engines only).

Turn engine switch to ON(1) position.

Pull the starter rope toggle lightly until resistance is felt, then pull briskly using quick short pull. Do not pull rope to its full extent or allow toggle to snap back against engine. Return it gently to avoid damage.

When engine is warm open choke.

Position engine speed control lever to give required engine speed (usually full speed).

Commence vibration - the compactor is self-travelling.

To stop engine, position the engine speed control to slow and turn the engine switch to off(0).

Turn the fuel valve to off.

4. OPERATOR INSTRUCTIONS

Read section (1) - Safety.

NOTE: Drive between engine and vibrator is through a centrifugal clutch. Vibration

will commence as engine speed is increased.

Position the engine speed control lever to give required speed (usually full speed).

Commence compaction. The compactor is self travelling. Its speed of travel and the number of passes required to achieve optimum compaction depends on the type and condition of material being compacted and the layer depth.

Uniformly graded granular material compacts far more efficiently than wet cohesive material.

When Compacting block paving always use a rubber attachment mat, contact your agent for details.

When compacting blacktop always use a water spray, contact your agent for details.

Do not run the machine on solid concrete surfaces, as this is likely to cause damage.

5. VEE BELT ADJUSTMENT

It is important to note that belt tension in this application is much less than is generally accepted as normal. Too high a belt tension may lead to engine damage, excessive vibration in the handle, short belt life and short vibrator shaft bearing life due to excessive transmission of vibration through the belt. Correct adjustment is achieved by moving the engine back to just take the slack out of the belt.

6. WARRANTY CONDITIONS AND CLAIMS PROCEDURE

All products supplied by Fairport Construction Equipment Ltd (hereafter referred to as FCE) are warranted to be free of defects due to faulty materials or workmanship for a period of 12 months from the date of original despatch from FCE or as specified below:

Hydraulic hoses and hydraulic couplings – 3 months.

Hydraulic accumulators – 6 months.

Flexible drives – 6 months.

All spare parts used in repairs carried out by FCE or an authorised dealer or repairer – 3 months.

If the goods have been purchased through a stockist the above warranty periods also apply from receipt of the goods by the user of the equipment up to a total of a further 6 months from date of despatch from FCE whichever is earlier.

Filter elements, gauges and oils are specifically excluded from this warranty.

FCE shall at their option repair or replace during normal working hours goods accepted as faulty free of charge to the user.

For proprietary items such as engines, the original manufacturer's warranty and conditions shall apply.

CONDITIONS

The goods shall be returned at the purchaser's expense to FCE or to a destination FCE may reasonably direct. Carriage costs will be refunded if warranty is accepted.

Warranty claims will not be considered where there is evidence that failure has been caused by carelessness, improper use, negligence, inadequate servicing, incorrect engine speeds, fair wear and tear or non-compliance with instructions issued by the manufacturer.

To the extent permitted by law, the liability of FCE under this section is confined only to providing a remedy for defective goods and does not extend to any consequential loss, loss of profit, injury or damage suffered.

Warranty will not be accepted on dismantled goods unless dismantling was carried out with the written permission of FCE.

No claim shall be considered if other than genuine parts supplied by FCE have been used.

Products are only covered by this warranty in the country to where they were supplied by FCE.

Warranty on products applies only to the original user of the equipment.

This warranty shall not apply if the serial number or other identifying numbers or marks applied by FCE have been removed, defaced or are otherwise illegible.

CLAIMS PROCEDURE

Check that the goods are still under warranty before returning them to FCE (see above for warranty periods).

Return the goods to FCE with an order number for the work to proceed. If warranty is accepted no charge will be made. If warranty is not accepted a quotation will be given for the repair and the conditions under the section headed REPAIRS AND ESTIMATES will apply.

In the customer's interest, goods must be accompanied by documentation detailing the nature of the fault or its symptoms. Phrases such as 'Faulty' are unacceptable

and will result in delays and possible charges to defray costs incurred in identifying the fault.

In the case of hydraulic breakers and power packs, both the breaker and the pack should be returned

7. REPAIRS AND ESTIMATES

When returning a machine, or an assembly for repair, always include an Advice Note quoting model and serial number of the machine.

An official order must also be forwarded to FCE giving detailed instructions. No repair work can be carried out unless covered by an official order.

An estimate will be submitted before proceeding with any repair. To partly cover the cost in dismantling, cleaning and inspection, a small charge will be made, this however will be waived upon receipt of your official instructions to proceed with the repair.

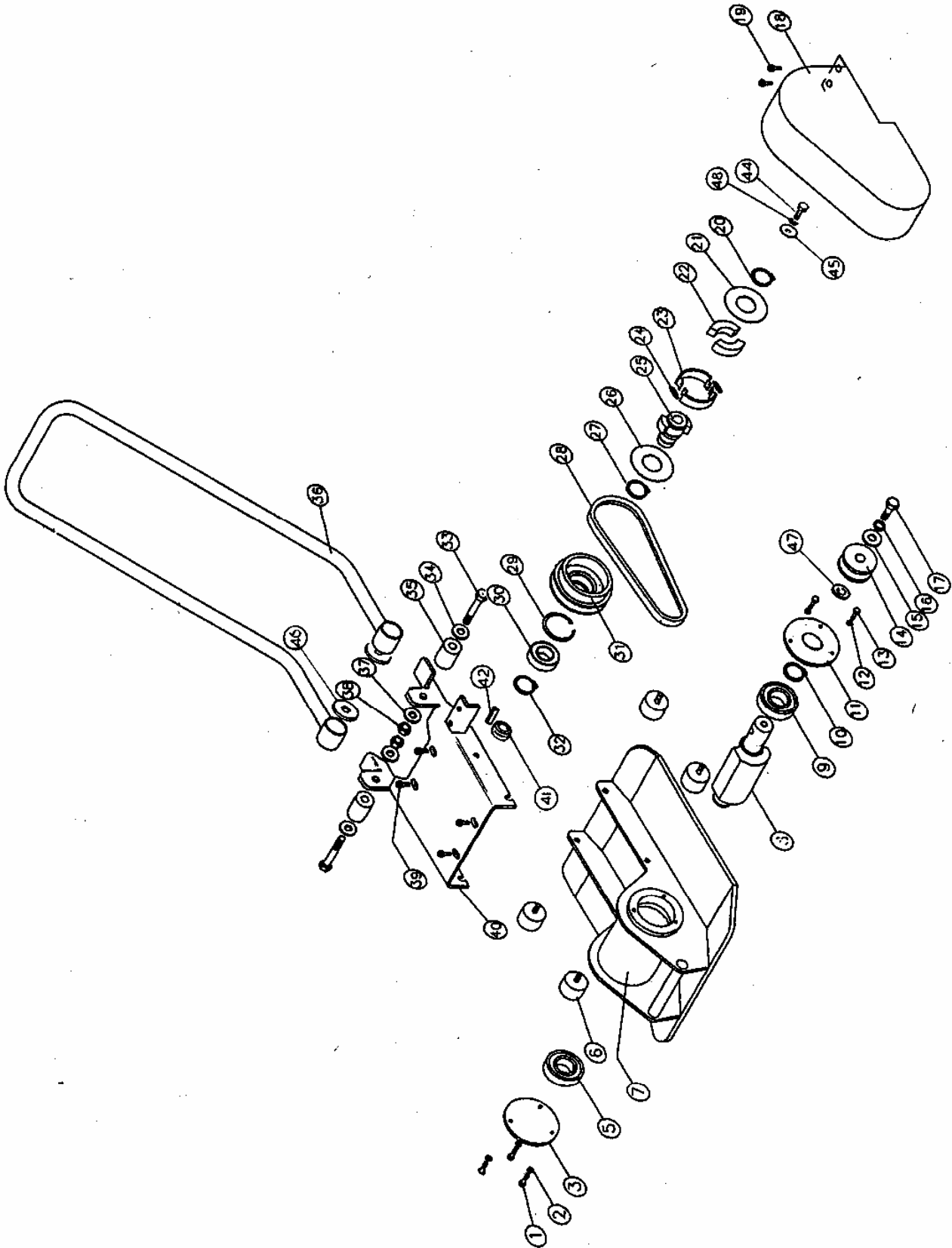
In the event of the estimate not being accepted, a further charge will be made to defray the rebuilding of the machine.

Estimates must be treated as approximate only as it may be found necessary to use additional parts on further examination.

8. PARTS LIST - M/C

<u>Parts List</u>	<u>Part Code</u>	<u>Description</u>	<u>Qty Required</u>
1	435/6/16	M6x16 bolt	3
2	439/6	M6 Shakeproof washer	3
3	W14600	Cover plate	1
5	W81041	Ball bearing	1
6	W88905	Rubber mount (prior to May 2002)	4
6	W88907	Rubber mount front (post to May 2002)	2
6	W88908	Rubber mount rear (post to May 2002)	2
7	W14609	Base plate	1
8	W14610	Exciter shaft	1
9	W81041	Ball bearing	1
10	W81153	Lipseal	1
11	W14601	Cover plate	1
12	439/6	M6 Shakeproof washer	3
13	437/6/16	M6x16 bolt	3
14	W14613	Pulley	1
15	526/12/40	Large dia washer	1
16	439/12	M12 Shakeproof washer	1
17	435/12/40	M12x40 bolt	1
18	W14566	Belt guard	1
19	437/8/16	M8x16	3
19a	526/8/25	M8 large diameter washer	3
19b	439/8	M8 Shakeproof washer	3
20	W81317	Circlip	1
21	LS-PC-050-021	Cover plate	1
22	LS-PC-050-022	Clutch weight	2
23	LS-PC-050-023	Clutch shoe	2
24	LS-PC-050-024	Clutch spring	2
25	LS-PC-050-025	Clutch main shaft	1
26	LS-PC-050-026	Cover plate	1
27	W81317	Circlip	1
28	W87290	V belt	1
29	W81260	Circlip	1
30	W81007	Ball bearing	1
31	LS-PC-050-031	Clutch pulley	1
32	W81303	Circlip	1
33	435/12/65	M12x65 bolt	2
34	526/12/40	M12 large diameter washer	2
35	LS-PC-050-035	Handle bush	2
36	W14611	Handle	1

PARTS DIAGRAM



Issue 3264 April 02
Issue 3271 July 02
Issue 3415 Sept 04
Issue 3454 Mar 05
Issue 3523 Dec 05

37	418/12	M12 plain washer	2
38	480/12	M12 Nyloc nut	2
39	437/8/25	M8x5 bolt	4
39a	526/8/25	M8 large diameter washer	4
39b	439/8	M8 Shakeproof washer	4
39c	480/8	M8 Nyloc nut	4
40	W14612	Top plate	1
41	W14569	Shaft adaptor	1
42	W14568	Special key	1
44	408/4/8	1/4"UNF x 1/2" set screw	1
45	525/4/16	1/4" large diameter washer	1
46	W14567	Spacer	2
47	526/12/25	M12 large dia. washer	As req'd to align pulleys
48	425/4	1/4" Shakeproof washer	1

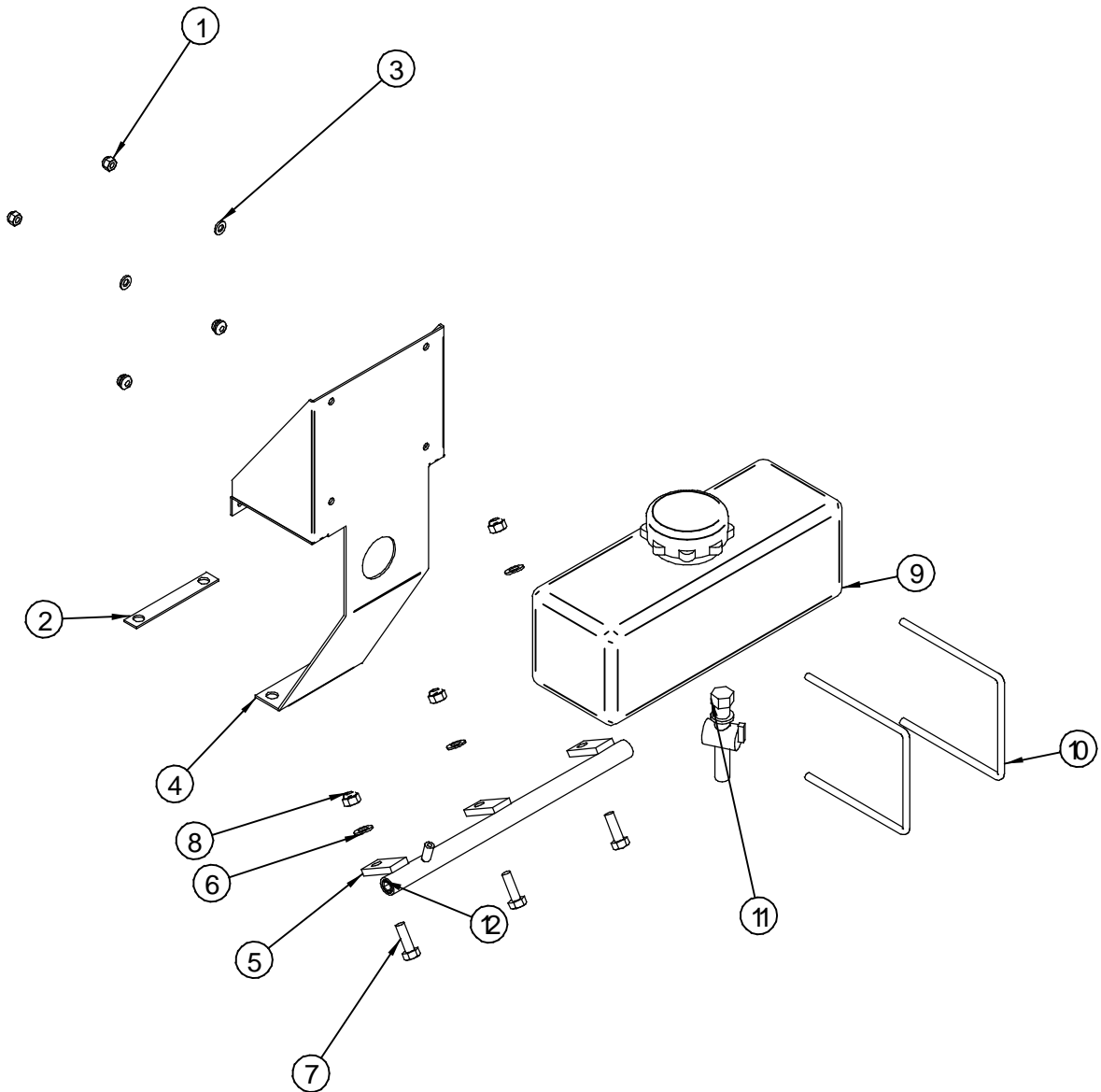
9. BLOCK COMPACTING MAT KIT

93011	Block compacting mat kit comprising:		
W14574	Clamp strip		1
W14573	Rubber mat		1
435/8/35	M8 x 35 hex. hd. bolt		3
480/8	M8 Nyloc nut		3
418/8	M8 star washer		6

10. WATER SPRINKLER KIT

93043	Water sprinkler kit comprising:		
W55031	Tank		1
W55038	Tank bracket		1
W55039	Rear engine spacer		1
W55040	Engine fixing		2
W51673	Spray bar		1
W51675	Hose tail		1
W80588	Tap		1
W87857	1/4" BSP back-nut		1
W87856	1/4" BSP socket plug		2
W80045	PVC feed pipe		400mm
437/8/20	M8 x 20 hex. hd. screw		4
437/8/25	M8 x 25 hex. hd. screw		3
480/8	M8 Nyloc nut		11
439/8	M8 Shakeproof washer		18

11. WATER SPRINKLER KIT GX100



Item Number	Document Number	Title	Material	Quantity
1	4806	M6 NYLOCNUT	PLATED	4
2	55042	SPACER	STEEL	1
3	4206	M6 WASHER	PLATED	4
4	55041	TANK SUPPORT	STEEL	1
5	51673	SPRAY TUBE	steel	1
6	418/8	M8 WASHER	PLATED	3
7	435/8/25	HEX BOLT M8 x 25	PLATED	3
8	4808	M8 NYLOCNUT	PLATED	3
9	55043	TANK PIECE WITH CAP	PLASTIC	1
10	55044	STRAP	STEEL	2
11	55045	TAP (CHARLESTENANT & COLTD REF BND12)	NYLON	1
12	87856	1/4 BSP PLUG	steel	2

EC Declaration of Conformity

We Fairport Construction Equipment Limited

Blagden Street

Sheffield

S2 5QS

Declare that the product

PP 33 Fitted with Honda GX100 engine

Manufactured from 1 Sept 2004

conforms to the following Directives:

89/336/EEC, 89/392/EEC, 91/368/EEC, 2000/14/EC

uses the following standards:

BS EN 292-1, BS EN 292-2, BS EN 294

conforms to the following Statutory Instruments

The Supply of Machinery (Safety) Regulations 1992 & amendments

Complies with the relevant essential health and safety requirements of the Machinery Directive

Technical Construction File no. **93075**

Noise Construction Technical File **PP33 2004**



Technical Manager

Signature	Position
R.J.Castle I.Eng M.I.Mech.E.	12/12/2005

Signed by	Date
-----------	------